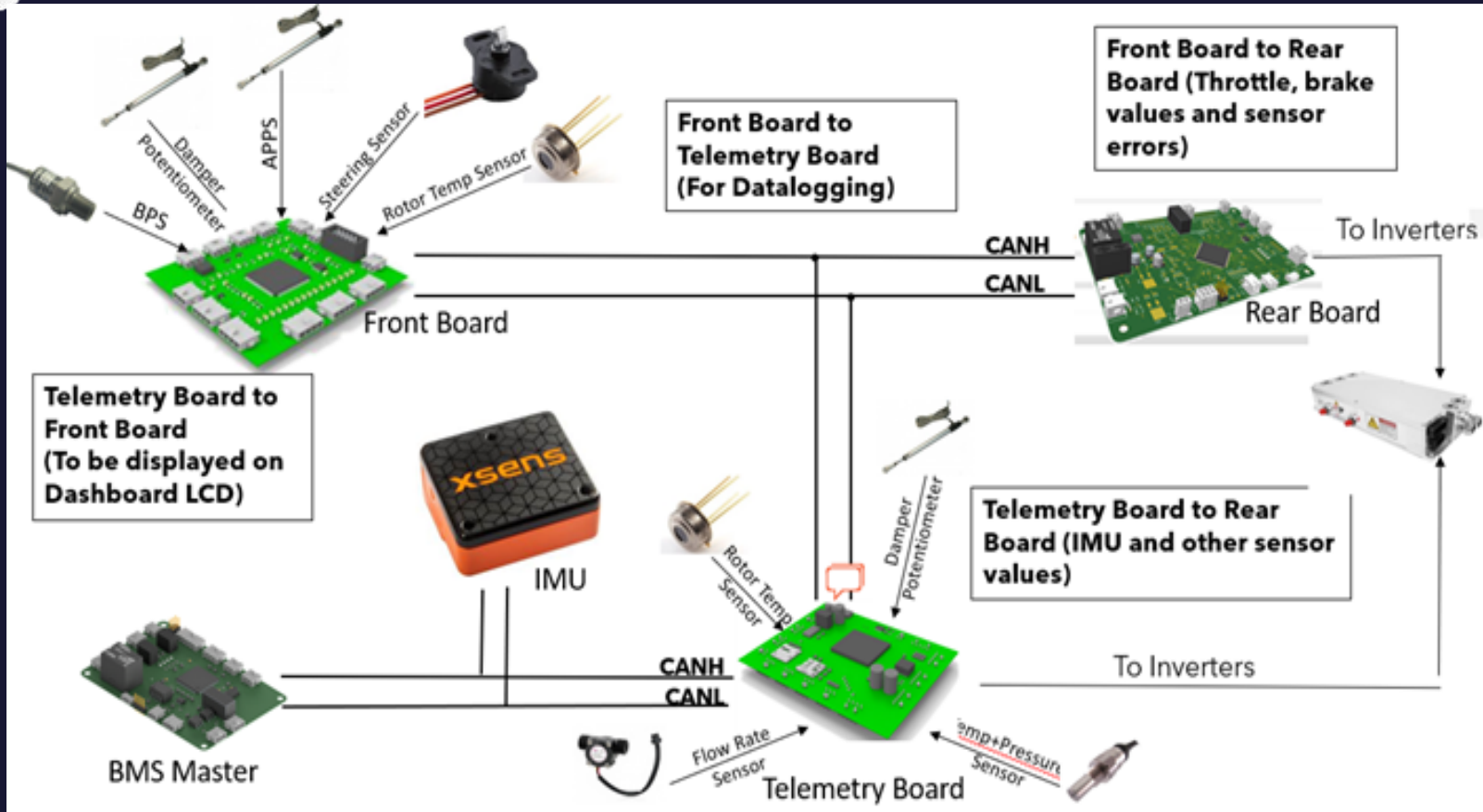
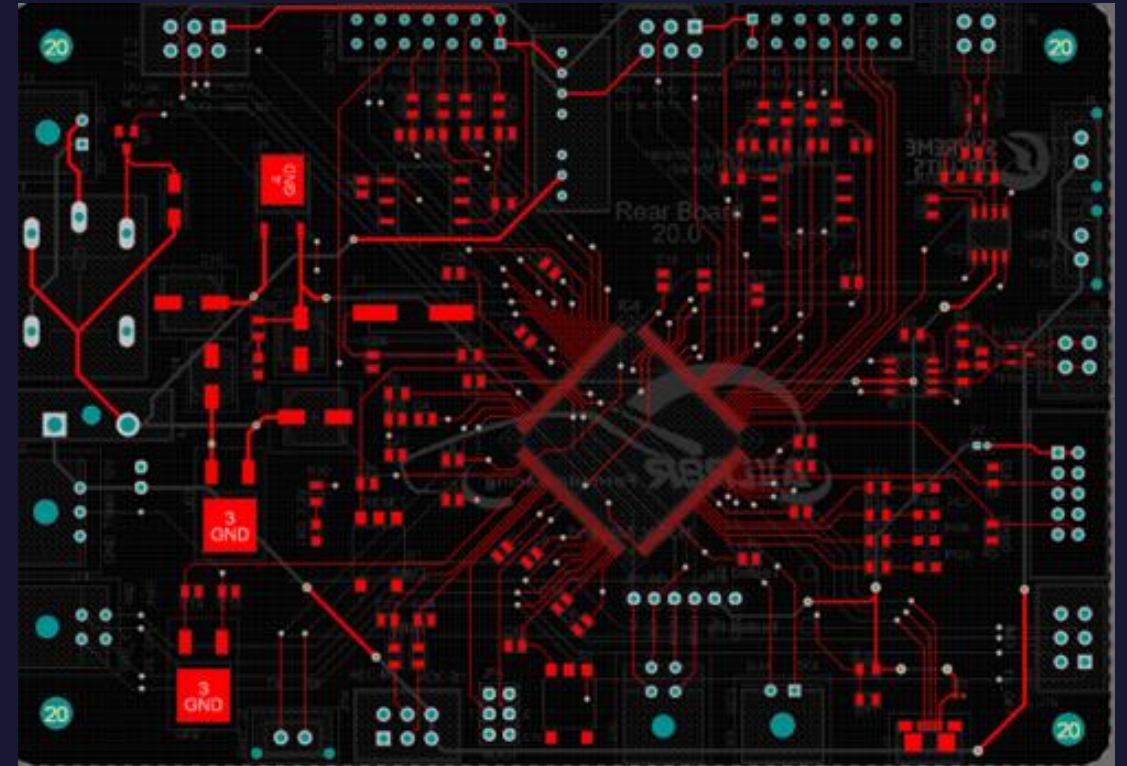
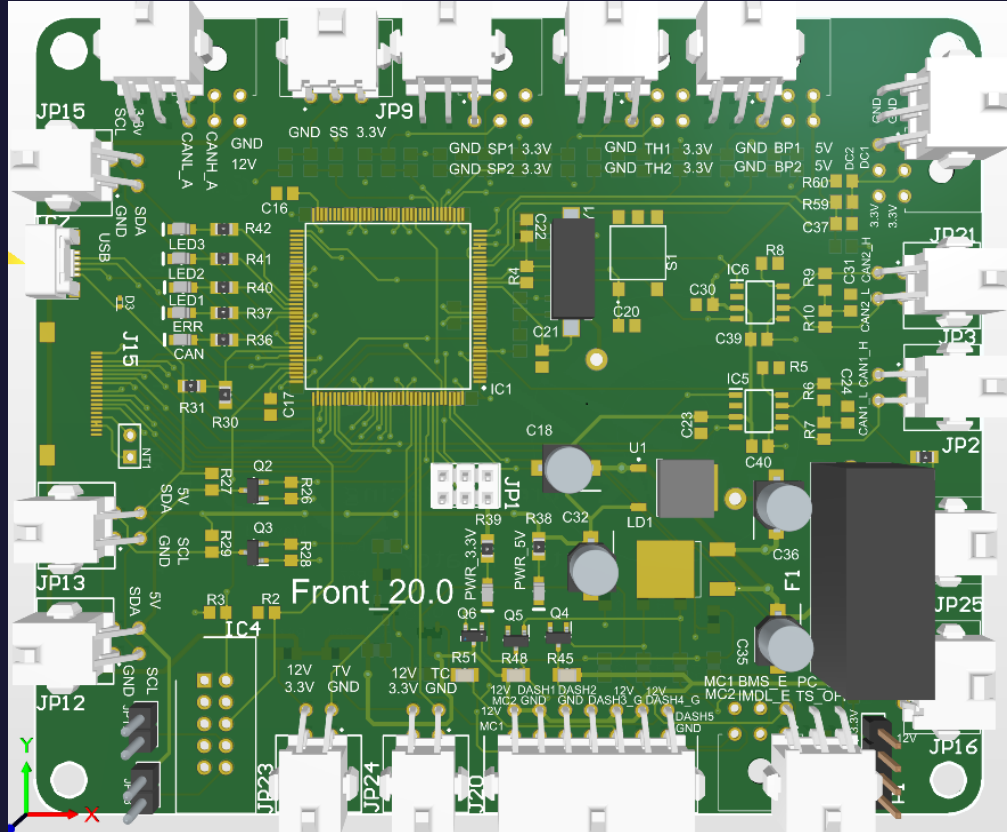


# AXLR8R Formula Racing



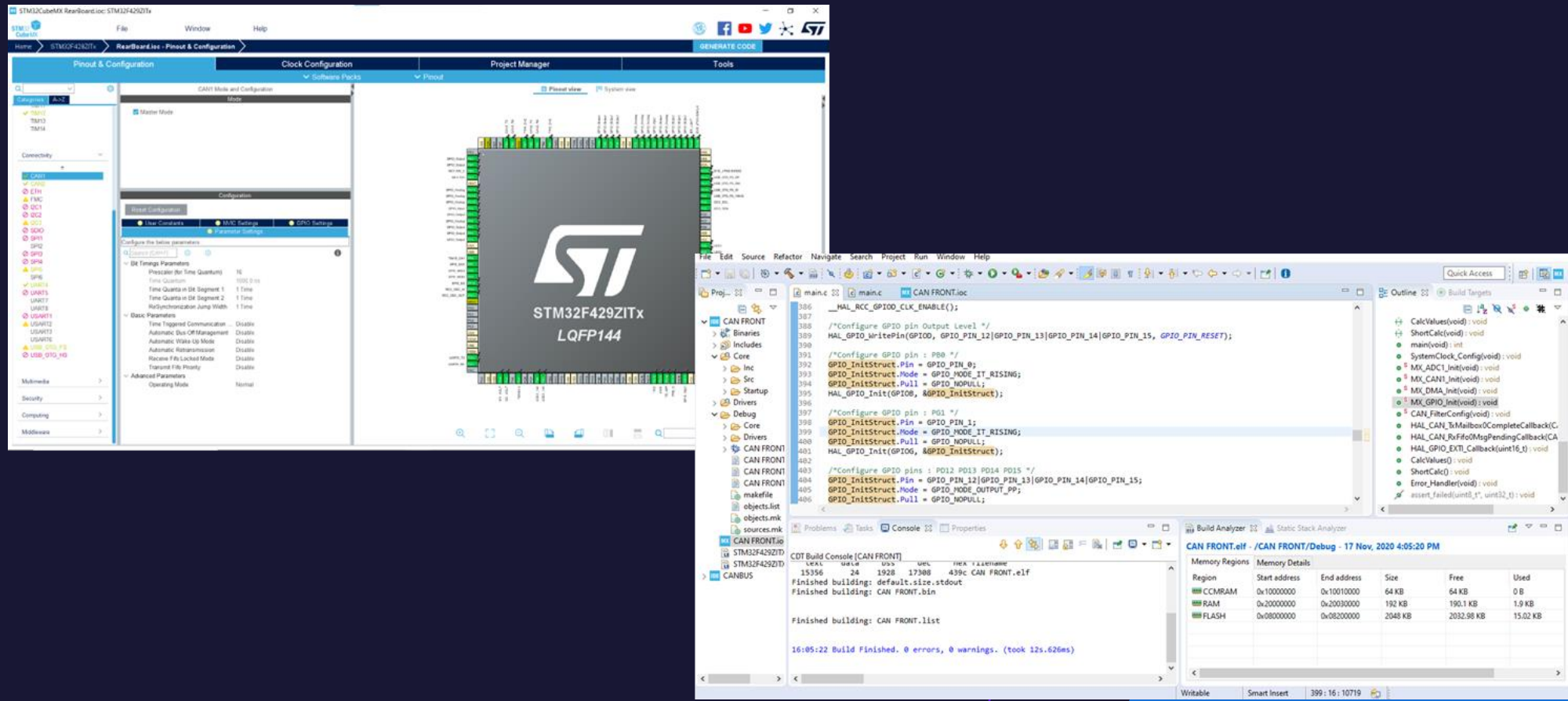
# Major Work done

- Hardware Designing
  - Designed custom STM32F4 microcontroller based Electronics control units
  - Designed PCB for related system



# Major Work done

- Software
  - Developed the code for data acquisition and its manipulation for decision control
  - Implemented different communication protocol such as I2C, SPI, CAN





# Major Work done

- Testing
  - Developed the test plans to validate the design systems and test it.

